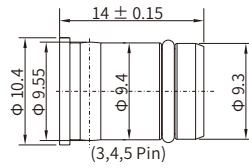


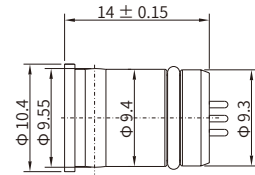
M12 B-coding (Profibus)

M12 B-coding Straight Connector, Plastic Housing with O-ring

Male Solder



Male PCB Type



Specifications

Contacts	3	4	5
Pin layout(Male)			
Standard	IEC 61076-2-101		
Ambient temperature	-20°C ~ +90°C		
Connector insert	PA		
Connector contacts	Brass with gold plated		
Seal/O-ring	Epoxy resin / FKM		
Insulation resistance	≥100MΩ		
Contact resistance	≤5mΩ		
Earth tag/pin	Unavailable		
IP rating	IP67, IP68 in locked condition		
Mating endurance	>500 cycles		
Rated current	4 A		
Rated voltage	250V AC/DC		60V AC/DC

Part Number

Pins	Male	
	Solder	PCB Type
3	M12H-MSB03	M12H-MBB03
4	M12H-MSB04	M12H-MBB04
5	M12H-MSB05	M12H-MBB05